



Artist Impression Only.
Refer to Working Drawings & Inclusions

MATHESON 600 H



Min. block width

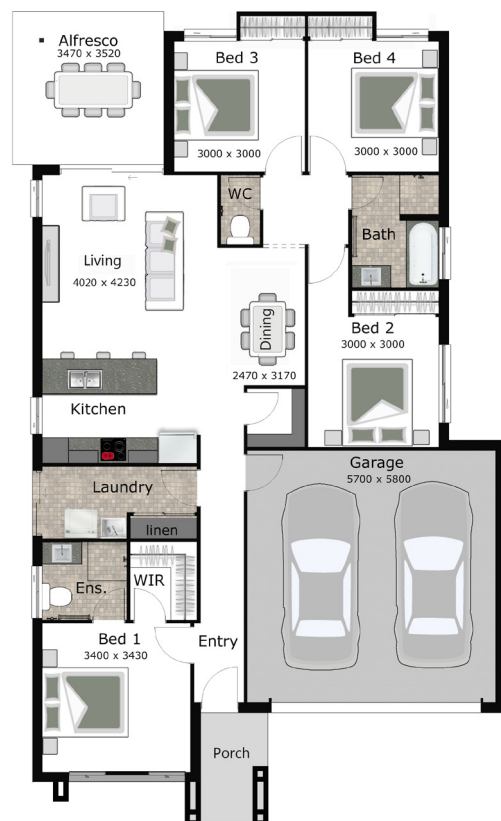
13.85m

House length

18.71m

House width

11.30m



Total floor area

172.77m²

TILE ROOF



TURN KEY HOUSE PACKAGE

BRONZE

Koorringal Homes Inclusions
(as at 17.10.2018)

Interior

KITCHENS

- 600mm upright stove with ducted exhaust fan.
- 1 $\frac{3}{4}$ bowl stainless steel sinks including basket waste.
- Fully lined kitchen base cabinet with post form laminate top.
- Appliances available in stainless steel only.
- Mixer tap to sinks.

BATHROOMS & ENSUITE

- Vitreous china square vanity basins (white).
- Fully lined vanity base cabinet with post form laminate top.
- Acrylic designer bath (white).
- Dual flush vitreous china close coupled toilet suite (white) including skirting pan and enclosed trap.
- Frameless mirrors – above vanity benchtop.
- Shower – glass pivot doors and colour matched frames with tiled base.
- Lever mixer tapware, multi directional shower rose and 220mm wall bath outlet.



LAUNDRIES

- Freestanding 45 litre acrylic tub and cabinet.
- Wall mounted washing machine taps .

CERAMIC TILING (FROM BUILDERS' STANDARD RANGE)

- Wall tiles to bathrooms and ensuite shower recesses with feature frieze (refer to plans and specification for details).
- Floor tiles to bathrooms, ensuite, WC and laundry.
- 150mm high skirting tiles to bathrooms, ensuite, WC and laundry (as per working drawing).
- 600mm High splashback to kitchen.
- Min 400mm high splash back to the laundry tub.

FLOOR COVERINGS

- Not included

FIXING

- 42mm MDF bevelled architraves and 67mm MDF bevelled skirting.
- Flush panel doors.
- Lever passage sets and pull handles.
- Vinyl sliding doors to wardrobes (as shown on plans).

CEILINGS

- 2440mm (overall plates) standard ceiling height.



PLASTER

- Cornice – 90mm plaster cove

PAINT

- 3 Coat Application.
- Low sheen acrylic to external timber work.
- Low sheen acrylic to internal walls.
- Flat acrylic white to ceiling.
- Gloss finish to internal woodwork.
- Gloss finish to front entry and internal doors.
- NOTE: Walls, woodwork to be one colour throughout.

ELECTRICAL

- Double power points and light points as per standard electrical layout.
- Safety switches (earth leakage detector).
- Power points as noted on plan.
- Smoke detectors.
- Telephone point to kitchen.
- 2 TV points, booster not included.
- 3 external light points outside living.
- Batten fixed light points.
- Separate power supply and conduit for NBN.

FOUNDATIONS

- Class 'H' concrete slab (No piling included).
- Part A termite treatment to slab penetrations and part B termite treatment to slab perimeter. As required by council.



Exterior

WINDOWS & EXTERNAL DOORS

- Sliding aluminium windows including keyed window locks.
- Entry door (façade specific) refer drawings.
- External door furniture (Deadlock not included).

GARAGE

- Metal sectional panel lift garage doors with remote control unit including 2 handsets and cradle. (selection of colours).
- Weatherproof hinged flush panel access doors.

INSULATION

- R2.5 Glasswool batts to ceiling of roof space (excluding garage).
- Glasswool wall batts including sisalation to external brick veneer walls.

ELECTRIC HOT WATER SERVICES

- Energy efficient electric heat pump hot water system.



ROOFING

- Monier tile roof.
- Colorbond fascia & gutter (selection of colours).

EXTERNAL

- Face brickwork and light cladding.
- Brushed concrete to alfresco.
- 2 External taps.

CONNECTION COST

- Connection of services (water, electricity, sewer, telephone, conduit and stormwater) based on 650m2 blocks with 300mm fall and 5m setback. Does not include electricity and telephone/internet consumer account opening fees.

STRUCTURAL

- Lifetime Structural Guarantee.